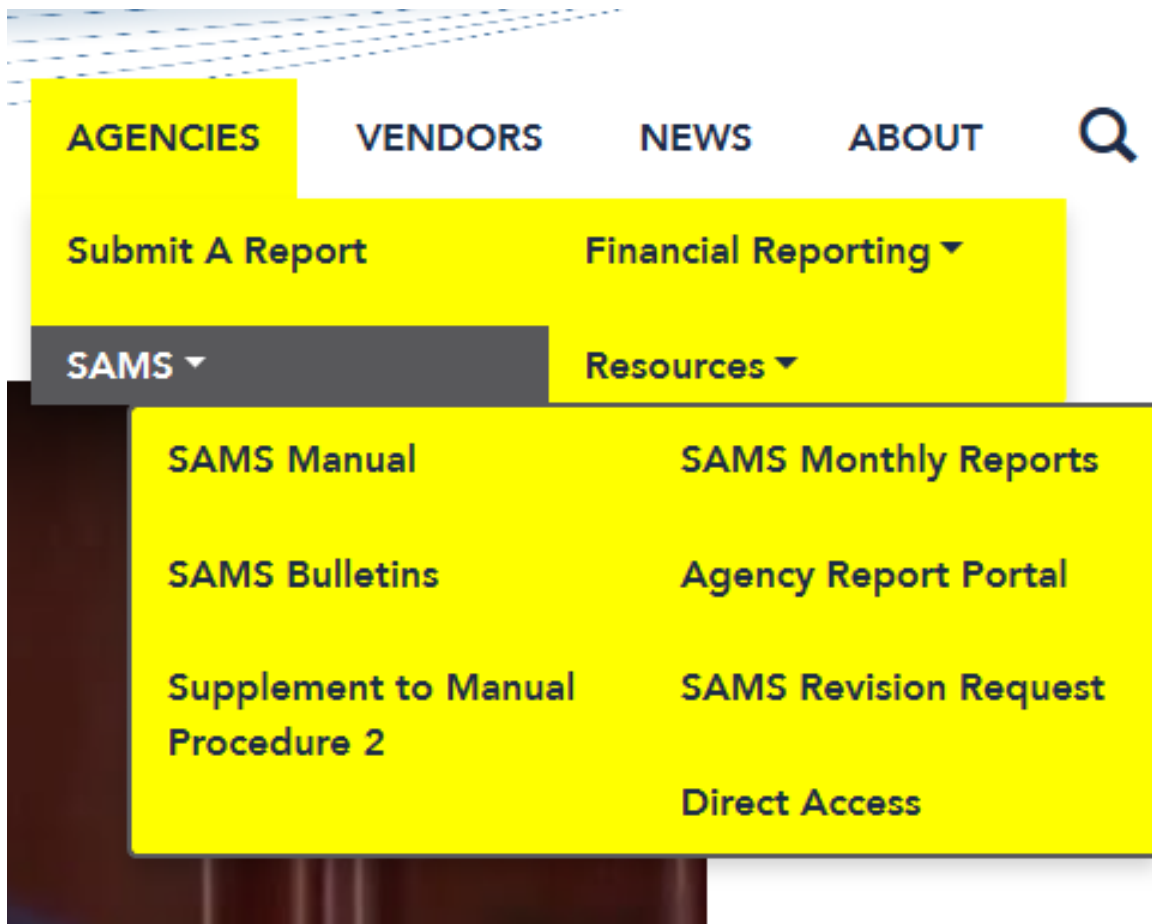


AGENCIES DB2 SETUP

Go to: <https://illinoiscomptroller.gov/>



- Hover your mouse over the menu option called “Agencies”
- Then “SAMS”
- Then click on “Direct Access”

Version 10 Software	Setup.Exe file (64-bit)
DB2v10 Setup Instructions	DB2v10 Setup Instructions PDF
Version 9.7 Software	Required License File
Instructions for IBM DB2 9.7	Instructions IBM DB2 v9.7
Data Dictionary	DOWNLOAD PDF
Direct Access Request	Online Request Form
VPN Users Only	VPN AnyConnect 4.7
SAMS Datawarehouse Training	Download Training Database Here

Click on “Setup.Exe file (64-Bit)”.

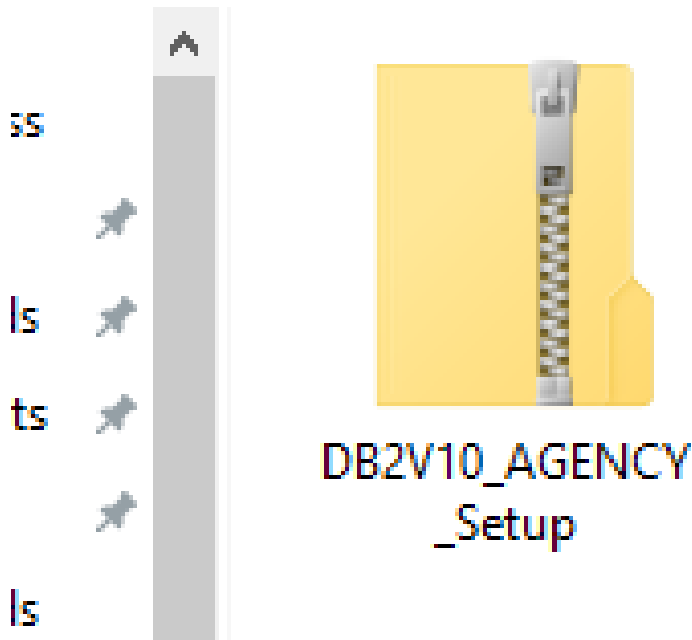
Note: “Setup.Exe file (64-Bit)” is a zip file.

Downloads

Share

View

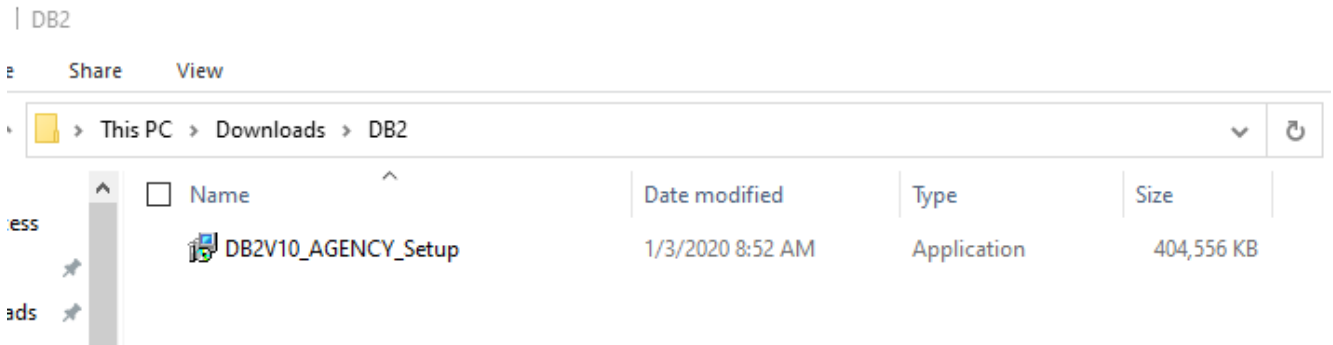
↓ > This PC > Downloads



Extract file to unzip

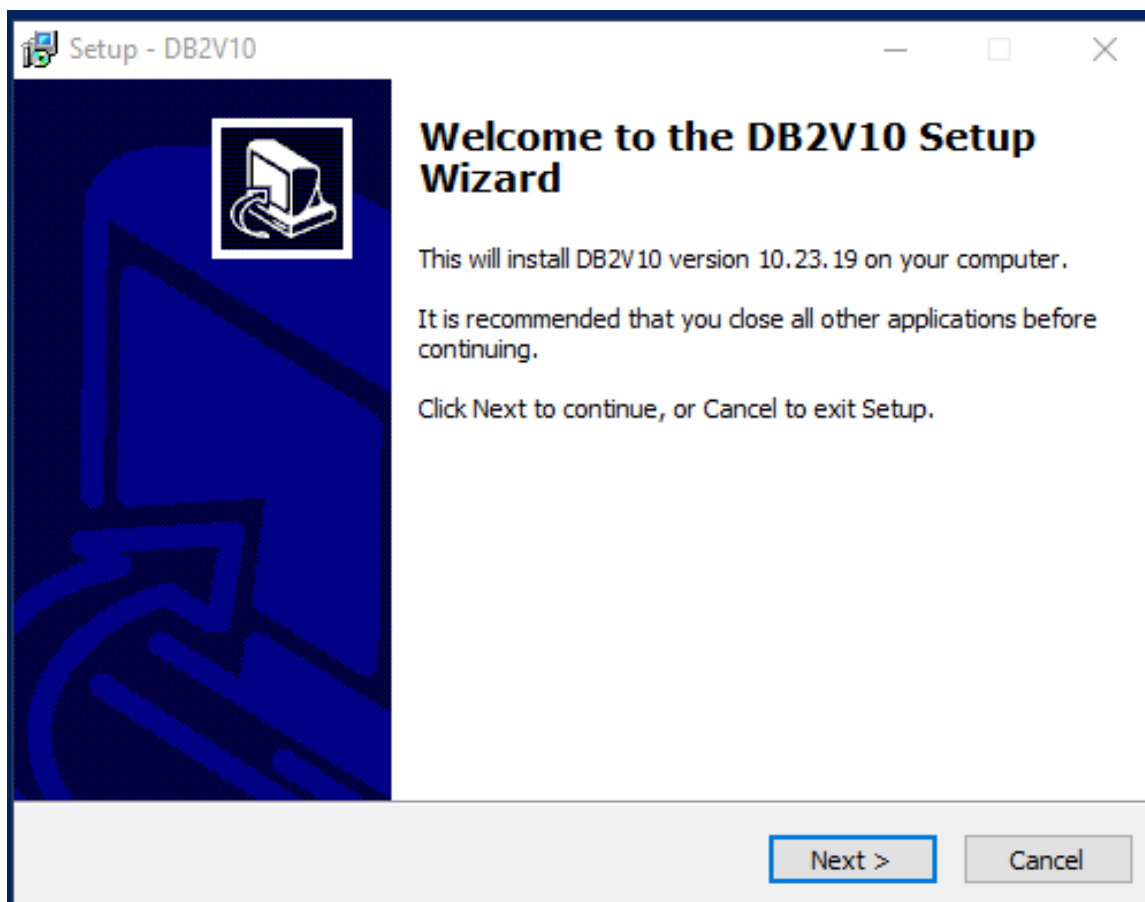
NOTE: Login as “Administrator Account” or make user an “Administrator” of their machine to run Setup.

If you are a government agency under the governor’s office, contact DoIT to have them perform a remote install. Use following link to contact DoIT, <https://www2.illinois.gov/sites/doit/support/Pages/ReportAProblem.aspx>

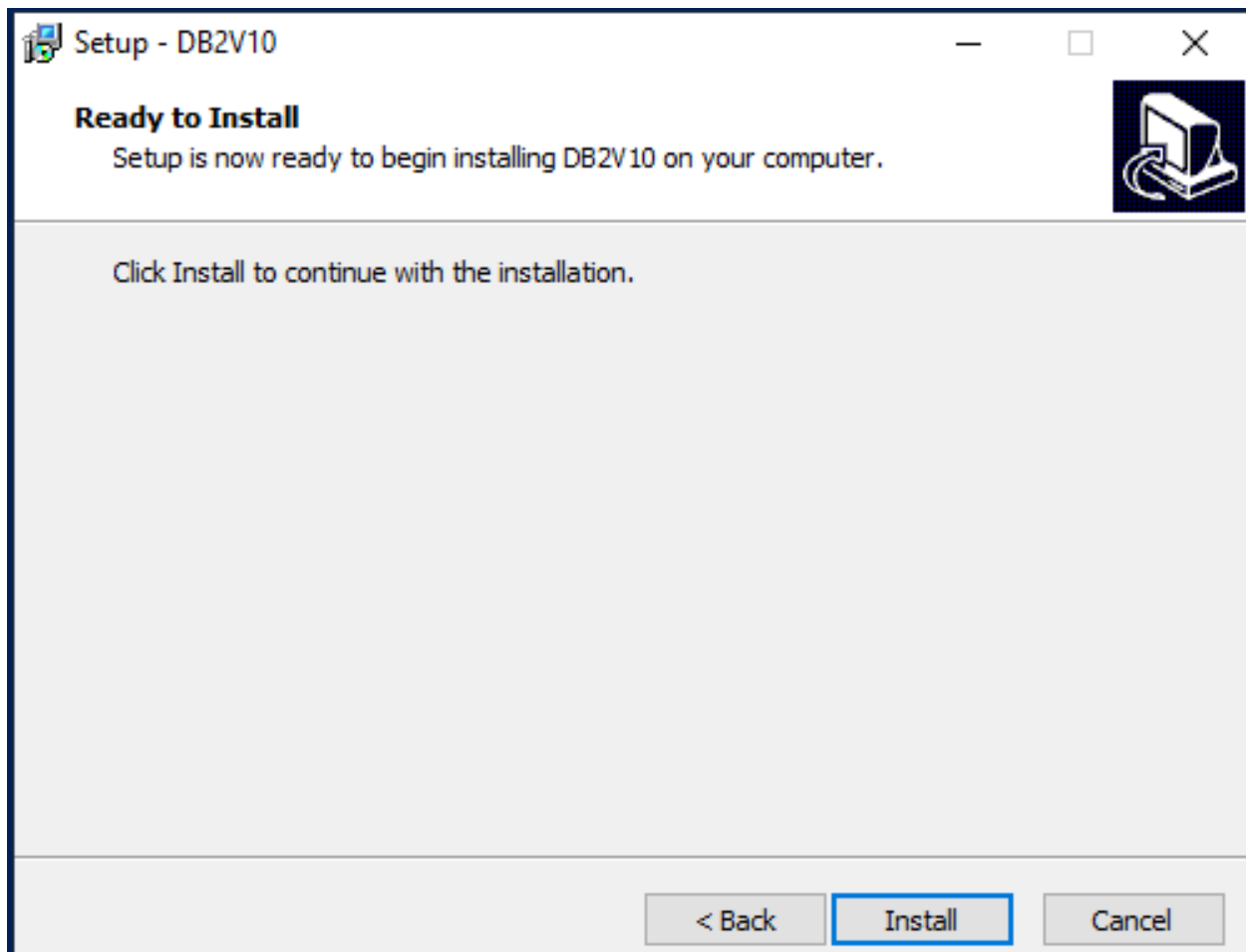


Run “DB2V10_AGENCY_Setup” as administrator

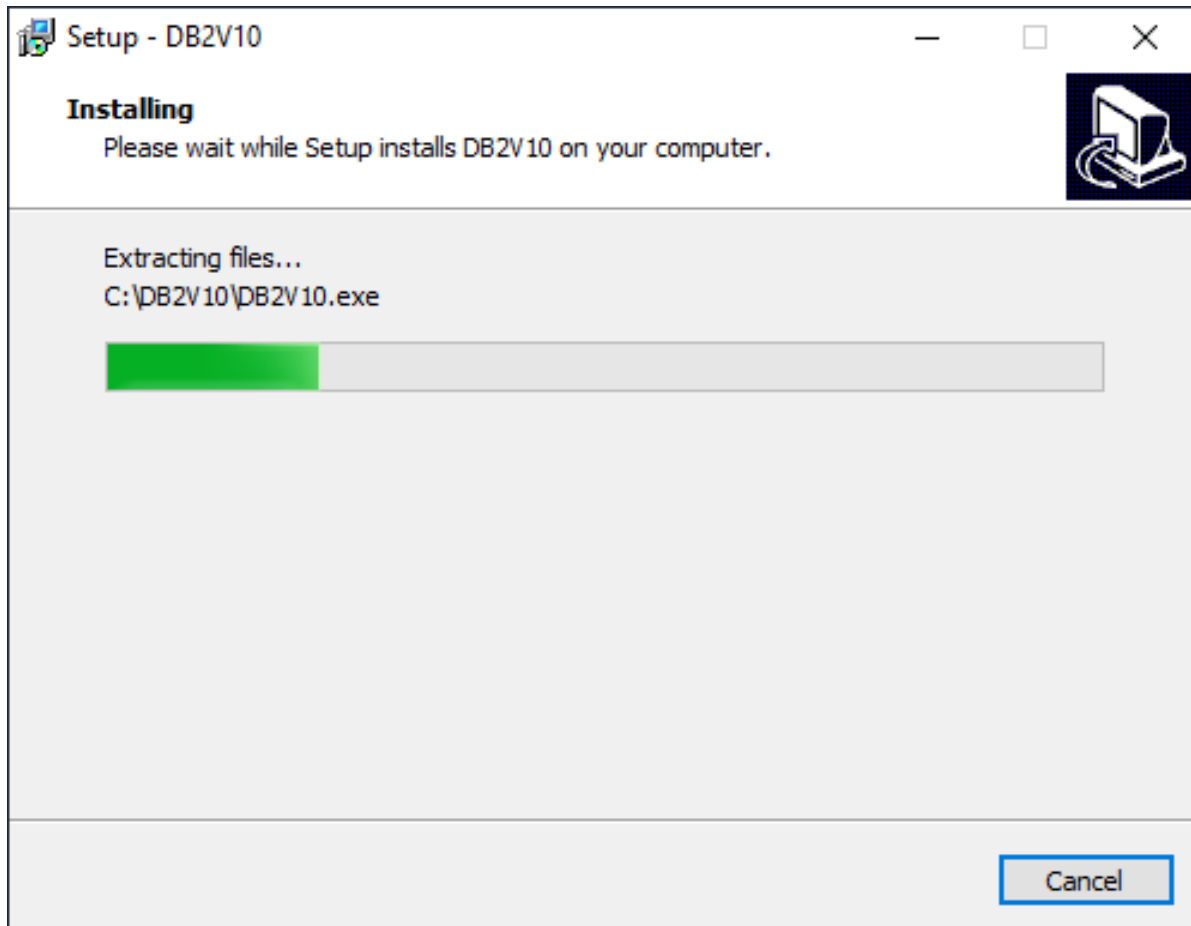
Note: Run setup “anyway” if message pop-up about Windows 10 Security



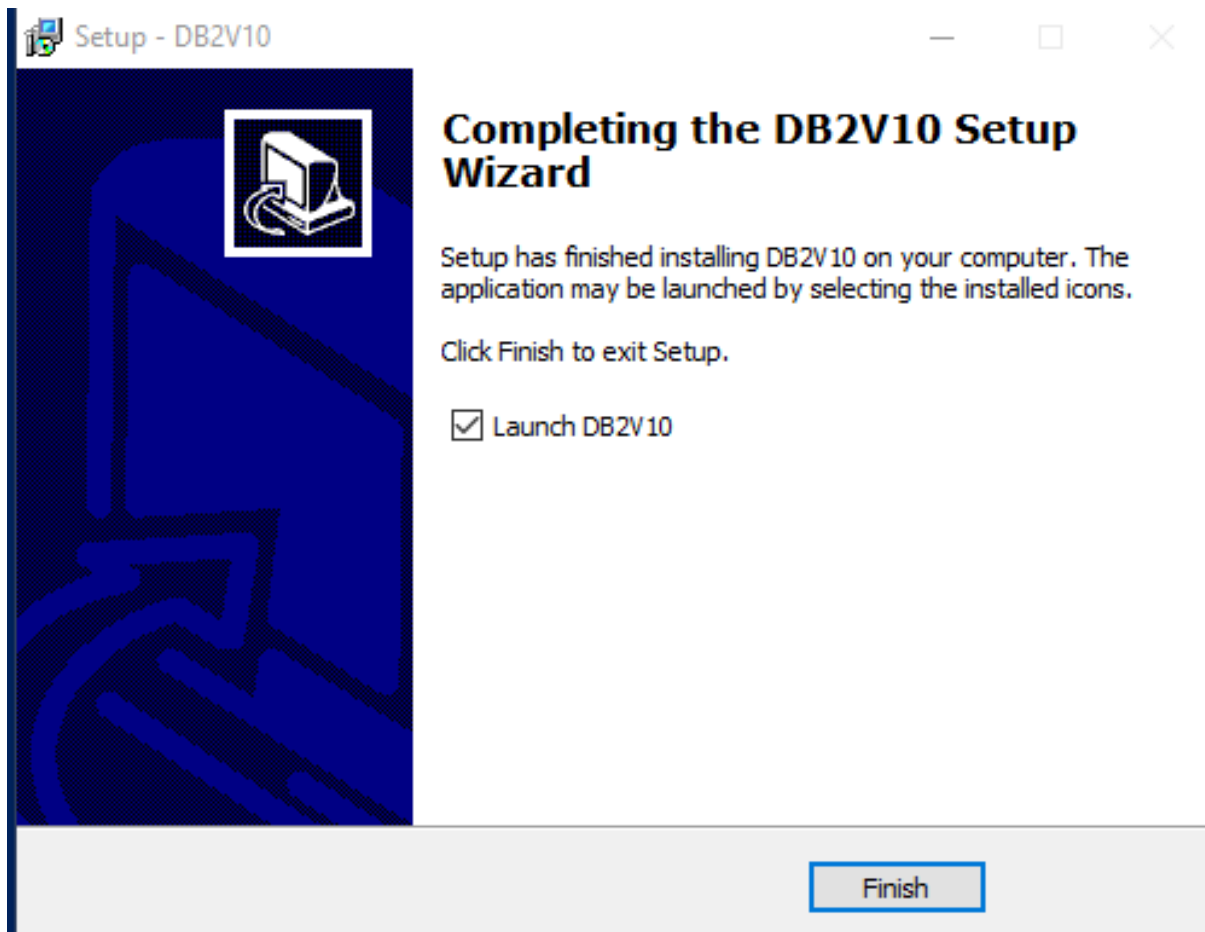
Click “Next”



Click "Install"



Wait!



Make sure "Launch DB2V10" is check marked and then click "Finish"

C:\WINDOWS\system32\cmd.exe

.
"Administrator rights are required to install DB2V10"

.

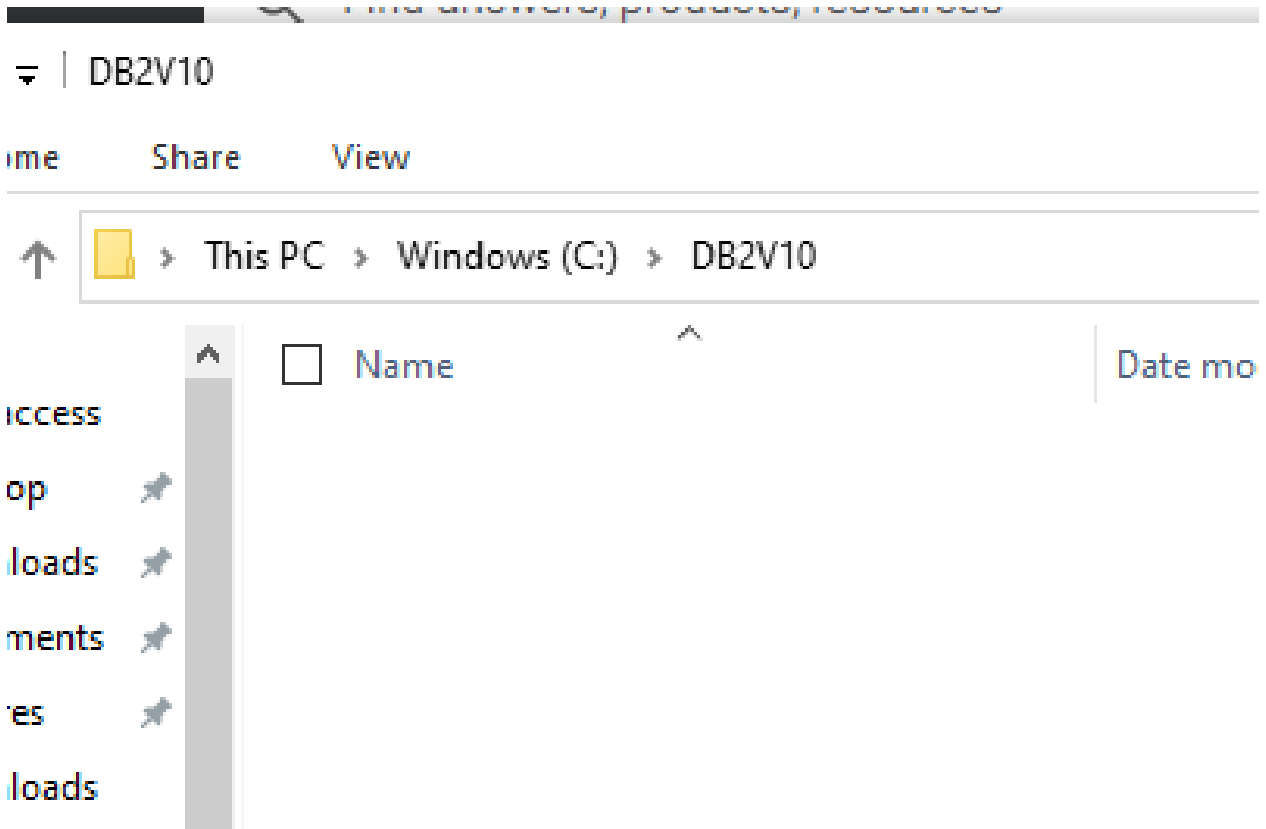
.
Press any key to continue . . .

Press any key to continue

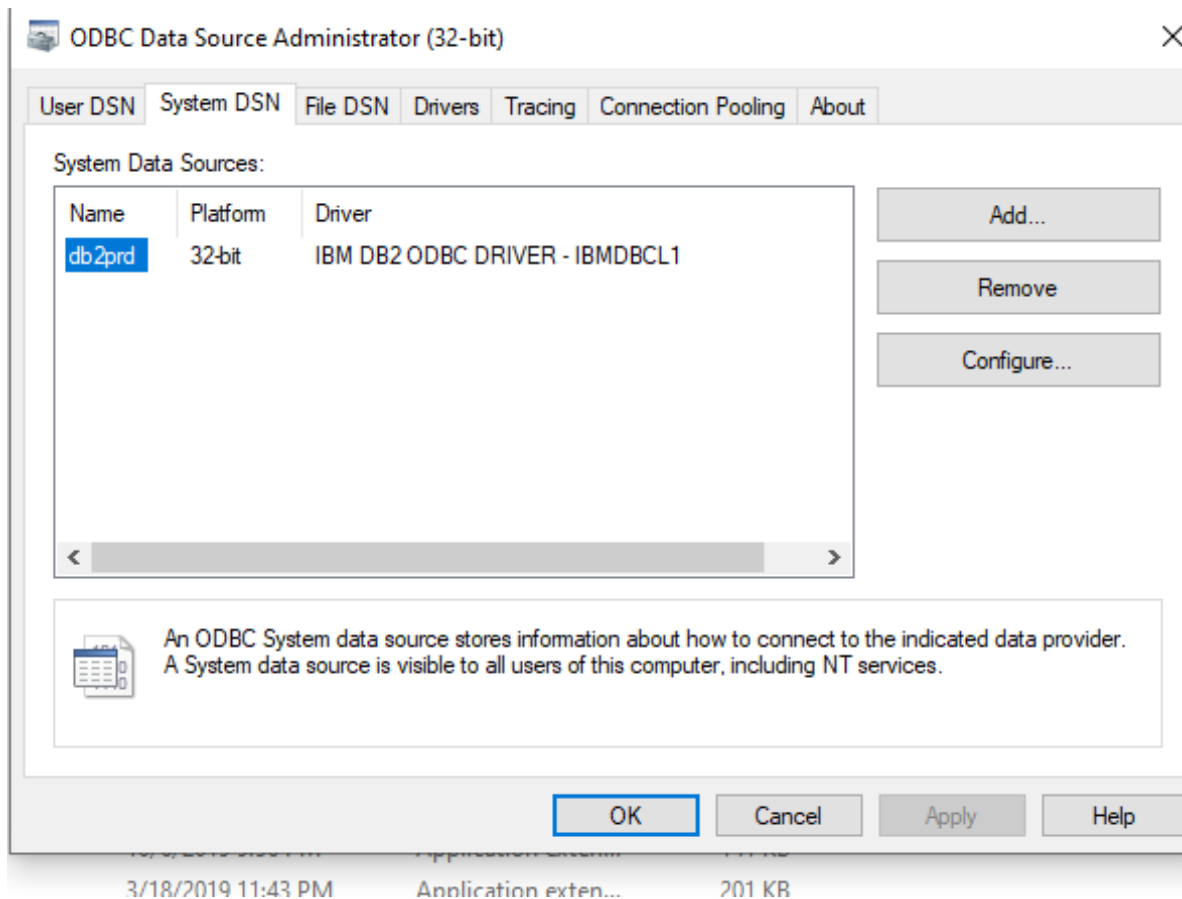

```
C:\WINDOWS\system32\cmd.exe

Administrator rights are required to install DB2V10"
.
.
Press any key to continue . . .
*****"Install DB2v10"*****
*****"Copy .cfg & .ini file"*****
      1 file(s) copied.
      1 file(s) copied.
      1 file(s) copied.
*****"Create the Data Source"*****
.
.
*****"Clean Up and Removing un-needed Install files"*****
Press any key to continue . . .
```

Verify 3 files copied and then press any key to continue.



Note: DB2 folder that contains the install file should be empty



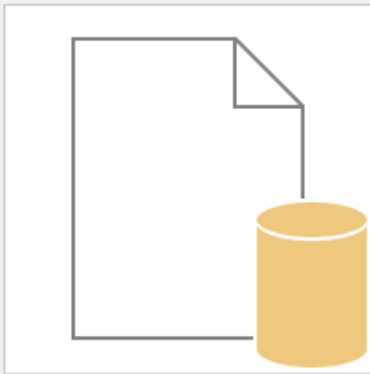
Verify “db2prd” ODBC is present under “System DSN”

Note: If “db2prd” ODBC is missing, go to page about “Just in case “db2prd” is missing in ODBC or “Machine Data Source”, follow below instructions to create one” or “Page 17”

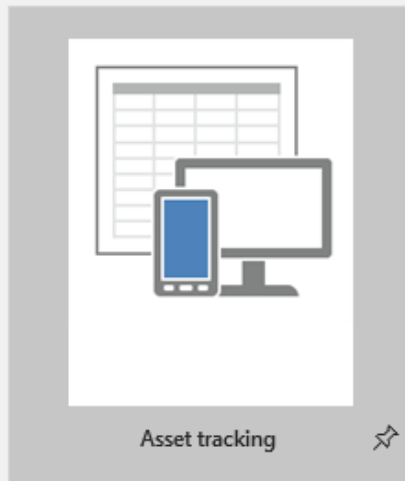
New

Search for online templates

Suggested searches: Database Business Logs Industry Lists Personal Con



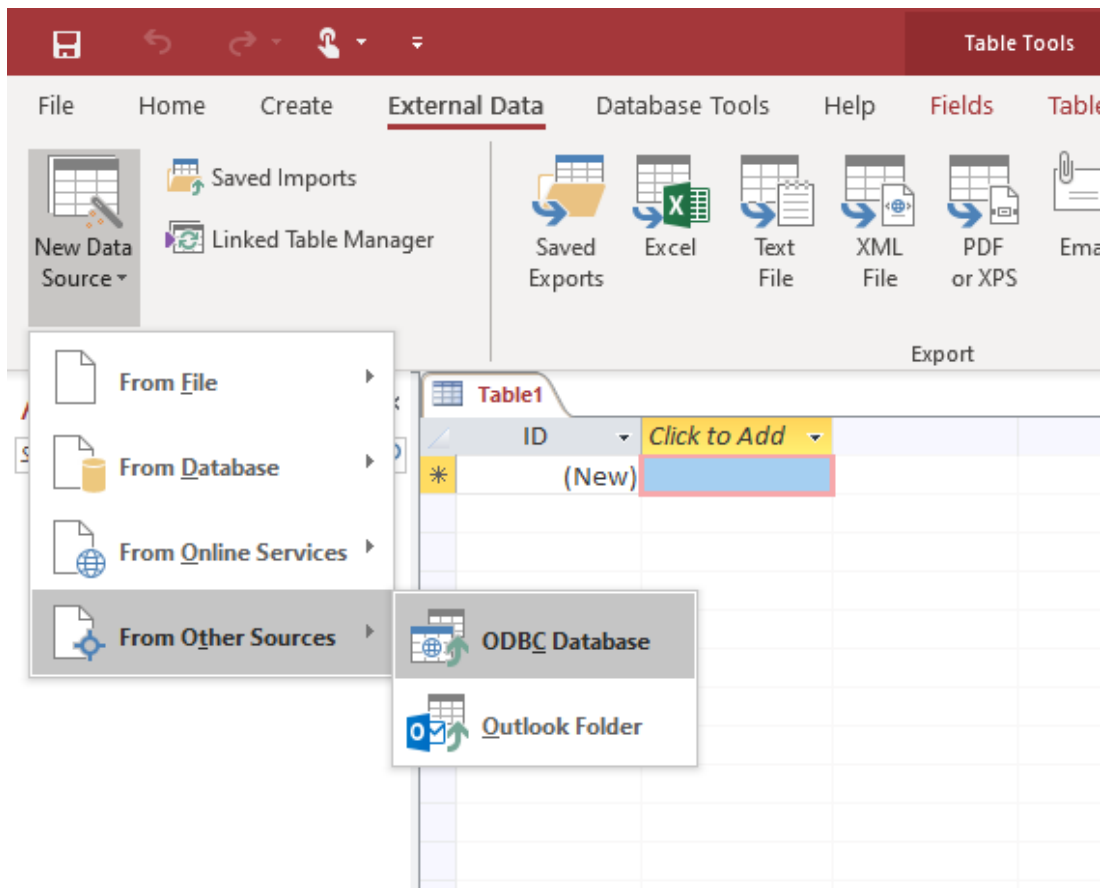
Blank database



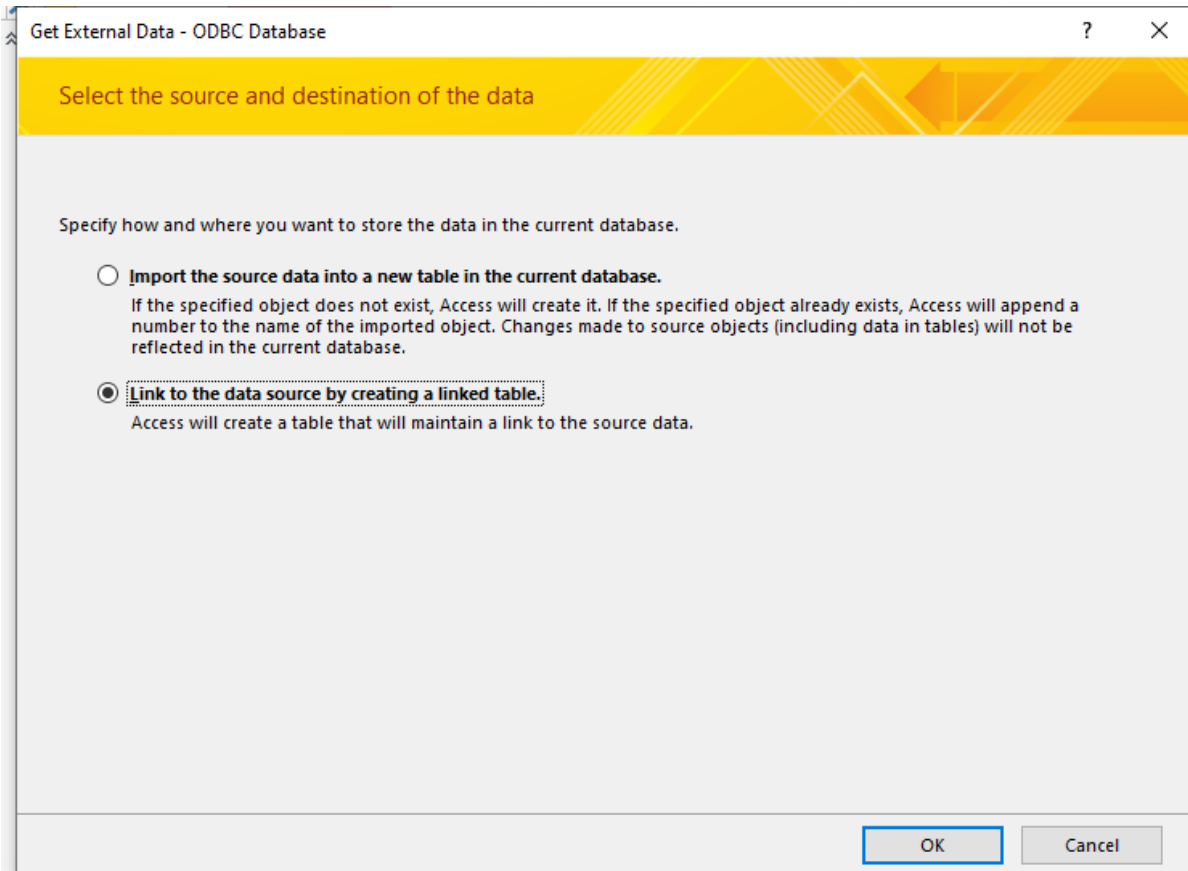
Asset tracking



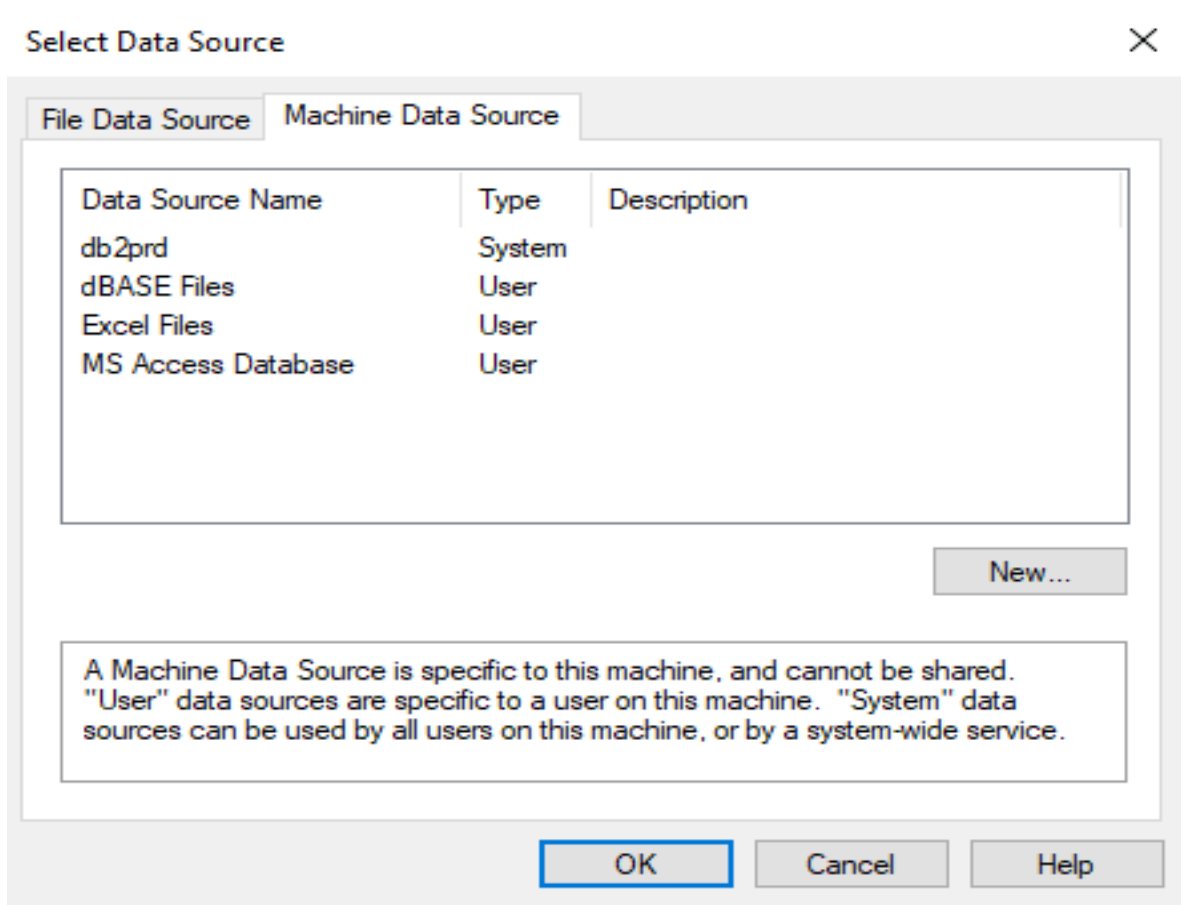
Open Access and open a “Blank database”



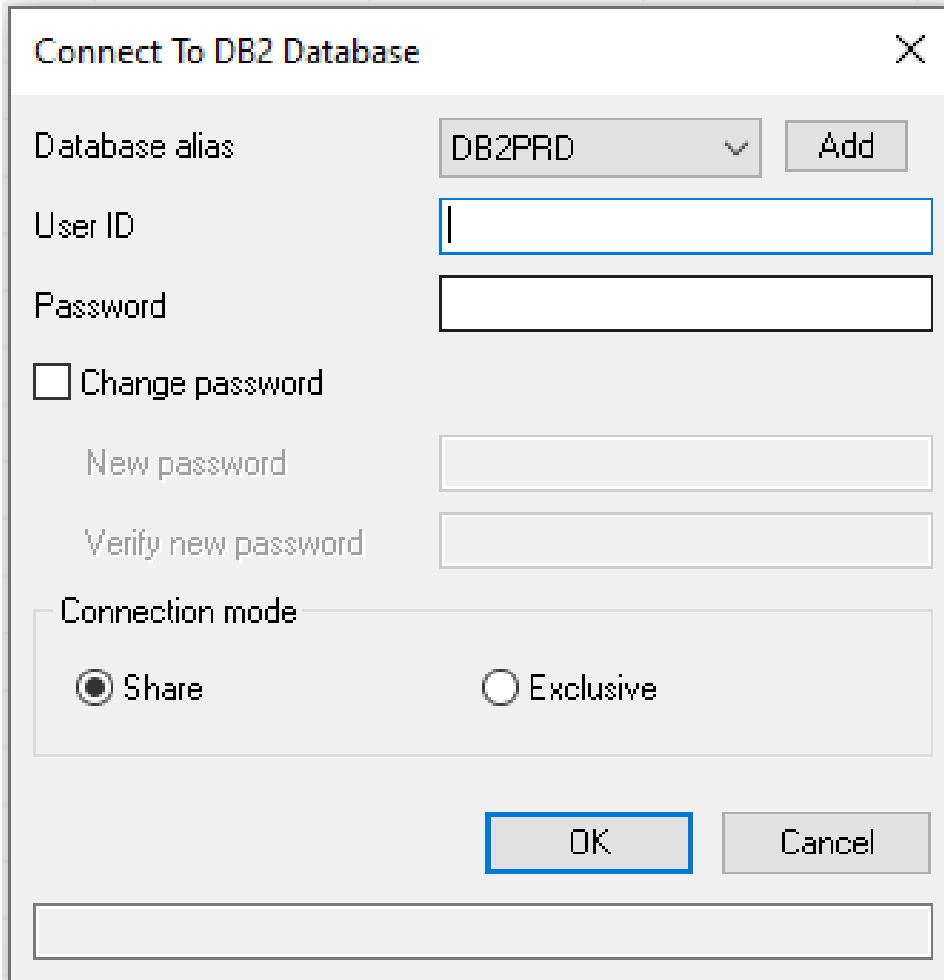
Click “External Data” – “New Data Source” – “From Other Sources” – “ODBC Database”



Select “Link to the data source by creating a linked table” and click “OK”



Select "Machine Data Source" tab and double click "db2prd"

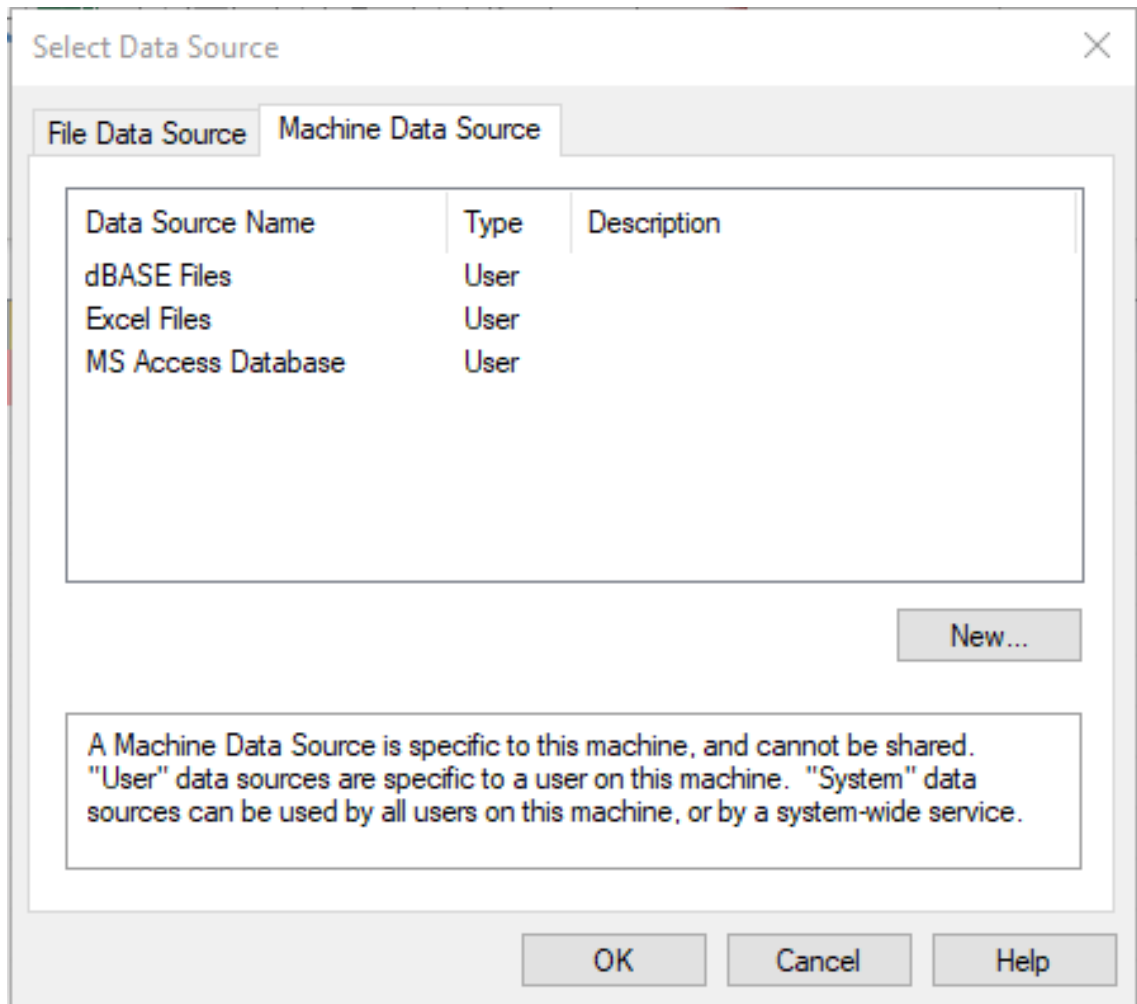


The image shows a dialog box titled "Connect To DB2 Database" with a close button (X) in the top right corner. The dialog contains the following fields and controls:

- Database alias:** A dropdown menu showing "DB2PRD" and an "Add" button to its right.
- User ID:** A text input field with a blue border.
- Password:** A text input field.
- Change password:** A checkbox that is currently unchecked.
- New password:** A text input field, disabled.
- Verify new password:** A text input field, disabled.
- Connection mode:** A section containing two radio buttons: "Share" (which is selected) and "Exclusive".
- Buttons:** "OK" and "Cancel" buttons at the bottom right.
- Footer:** A long, empty text input field at the very bottom.

Input your warehouse username and password, not VPN username and password. Table context should populate on the left side of Access after you click "OK".

Just in case “db2prd” is missing in ODBC or “Machine Data Source”, follow below instructions to create one”



Click “New” in “Machine Data Source” tab

Create New Data Source



Select a type of data source:

- User Data Source (Applies to this machine only)
- System Data Source (Applies to this machine only)

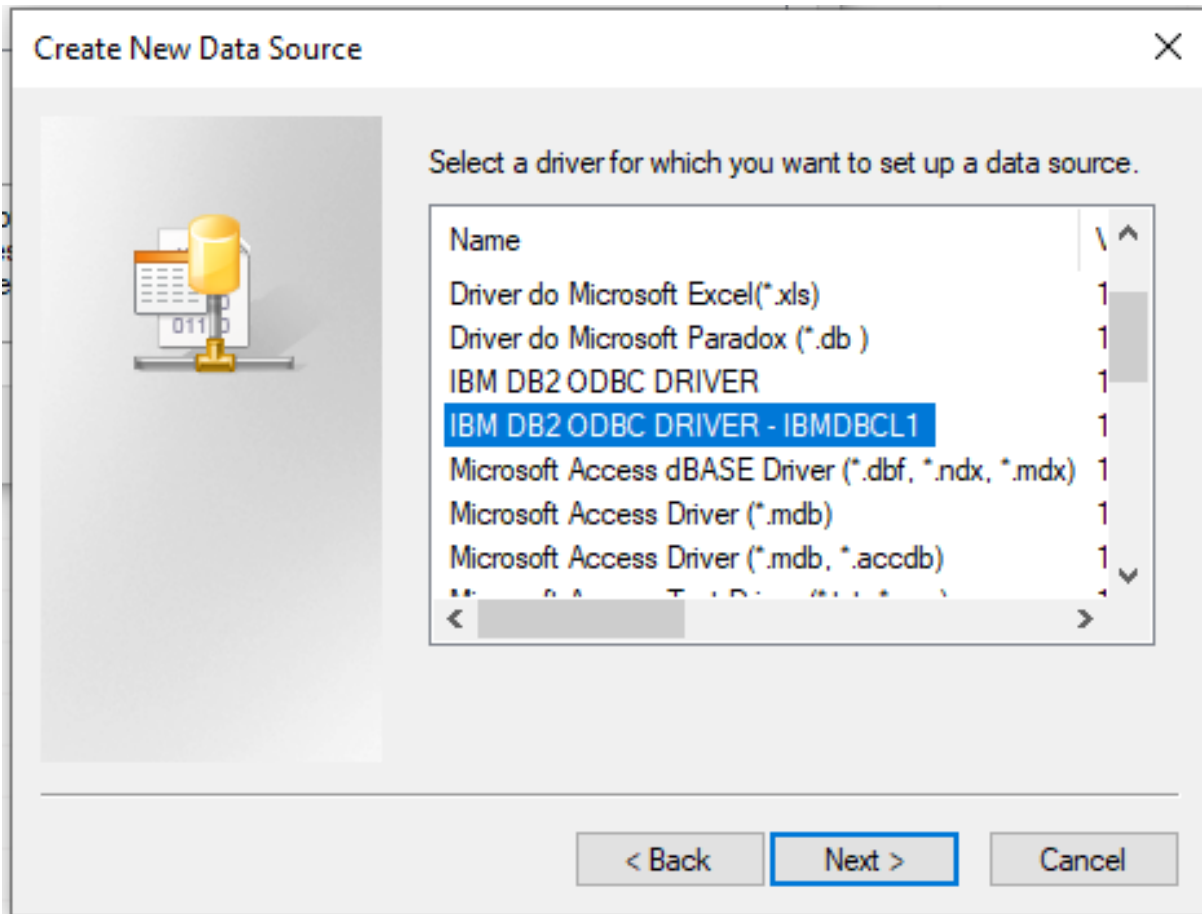
Selecting User Data Source creates a data source which is specific to this machine, and visible only to you.

< Back

Next >

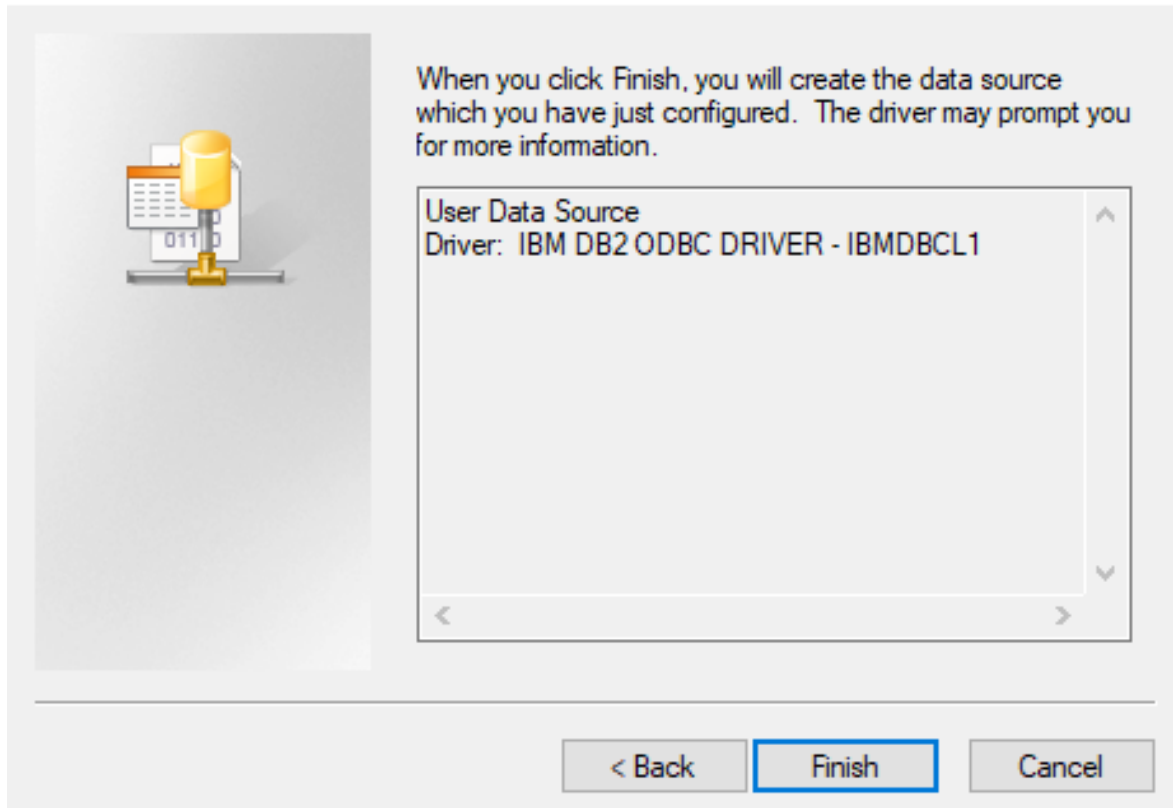
Cancel

Click "Next"

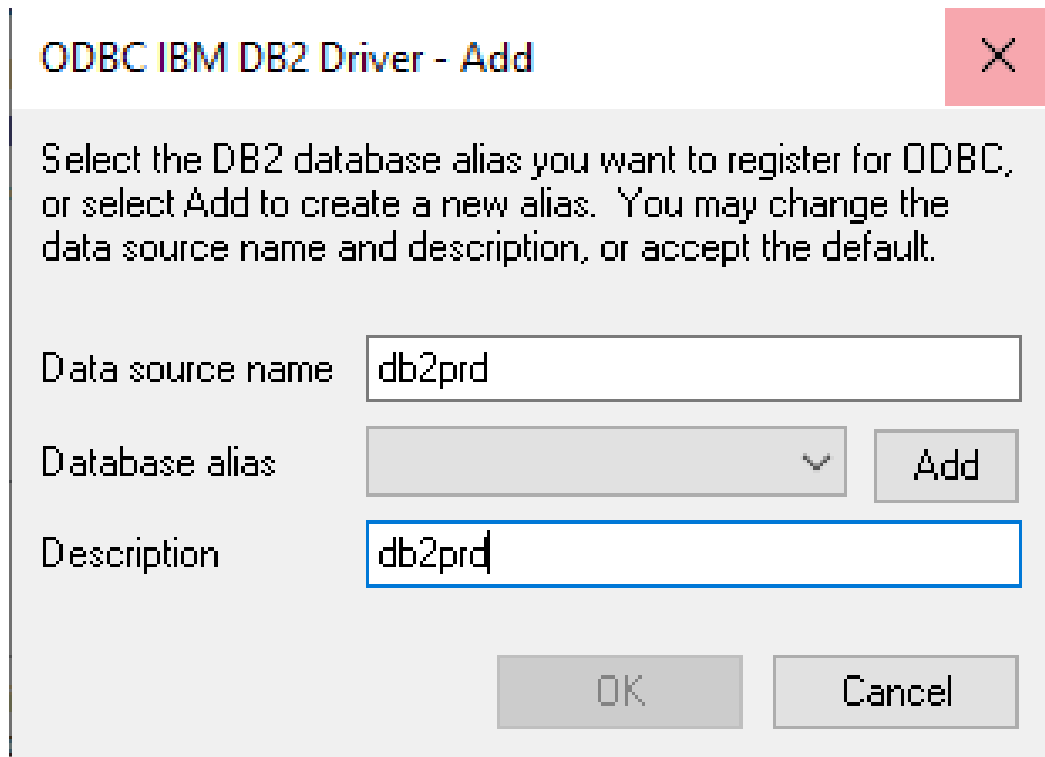


Select "IBM DB2 ODBC DRIVER – IBMDBCL1" and click "Next"

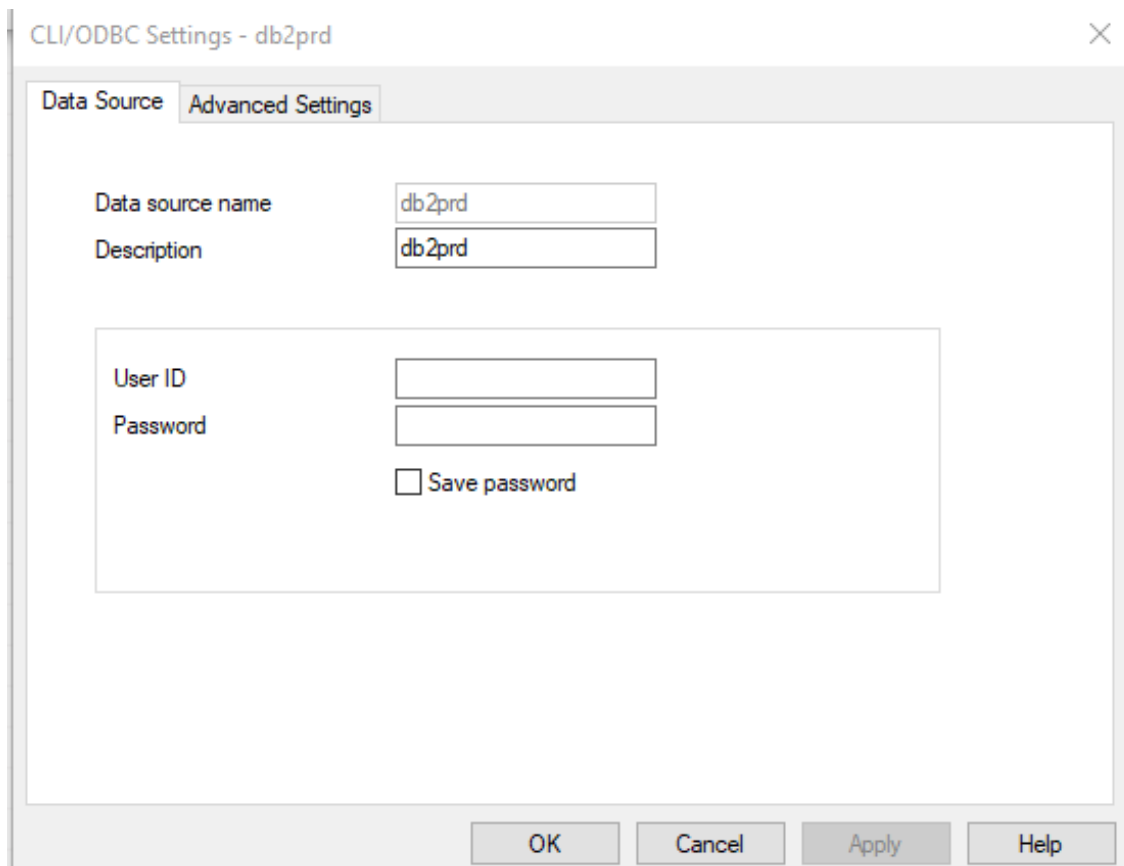
Create New Data Source



Click "Finish"

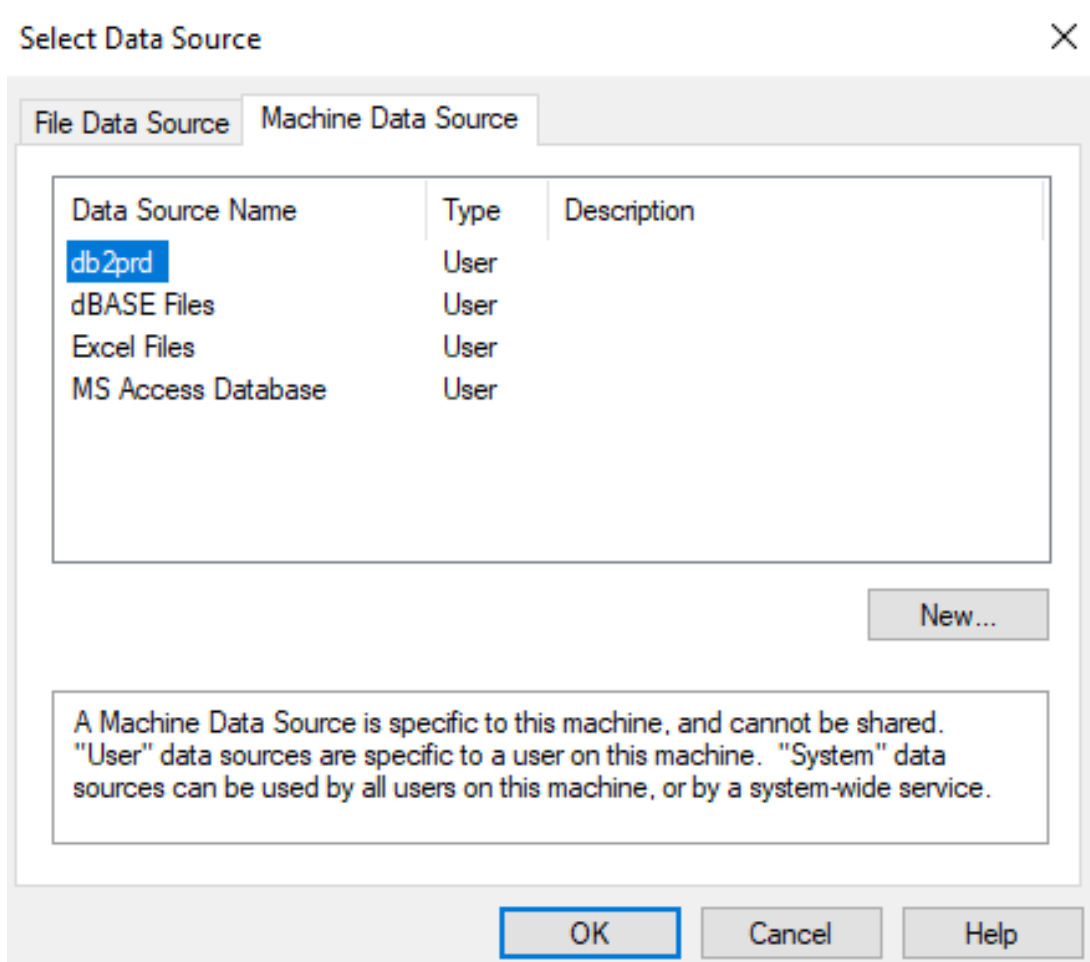


Input "db2prd" as shown and Click "Add"



The image shows a dialog box titled "CLI/ODBC Settings - db2prd" with a close button (X) in the top right corner. The dialog has two tabs: "Data Source" and "Advanced Settings", with "Advanced Settings" currently selected. Inside the dialog, there are two text input fields: "Data source name" containing "db2prd" and "Description" containing "db2prd". Below these is a larger rectangular area containing two more text input fields: "User ID" and "Password", both of which are currently empty. Underneath the "Password" field is a checkbox labeled "Save password", which is currently unchecked. At the bottom of the dialog, there are four buttons: "OK", "Cancel", "Apply", and "Help".

Input your warehouse username and password, not VPN username and password



Now go back to page where “Open Access and open a “Blank database” begins!